





Locksley 131

\$548,330

Lot 503 Partnership Way Wyndham Vale 3024 VIC

3  **2**  **1** 

Mimosa Homes Proudly Presents

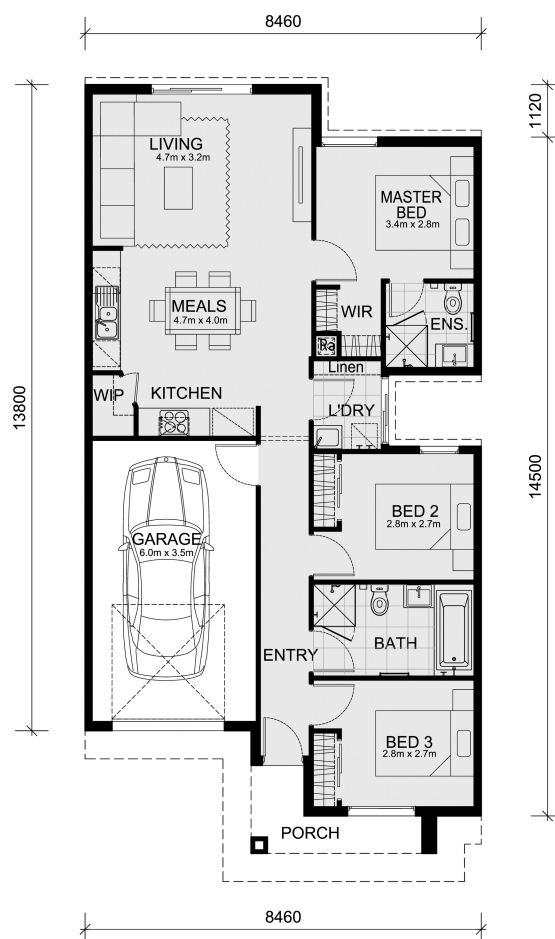
* The Locksley 131 House and Land Package!

* Mimosa Homes New Added Value Inclusions:

- Inclusive of site costs & connections with H1 class slab as per standard inclusions!
- 50 year Structural Warranty!
- Quality floor coverings throughout entire home!
- Double Glazed Awning windows!
- 600mm S/S upright oven and cook top with S/S canopy rangehood!
- Stainless steel Dishwasher
- 7 star energy!
- Turn Key Pack!
- Pre Priced upgrades and more!
- Contact us today to see what rebate we can offer you!

CALL BUILDER DIRECT!

All plans and facades are indicative only and may change. Mimosa Homes may amend plans, specifications, and prices without notice. Package prices are based on a standard facade, standard inclusions, and suitable land availability, excluding developer/estate requirements. Facade and inclusion images may show non standard items not included in the price. Dimensions are approximate. Landscaping, fencing, decking, planter boxes, driveways, and paths are excluded unless specified.



Area Details

Land Size: 238sqm
Building Size: 122sqm

Contact: Jay Yu
Phone: 0414 416 828
jay@mimosahomes.com.au

www.mimosahomes.com.au