



**Yallarah Estate**  
Verdure Boulevard, Echuca  
Lot 1415

**Facade:** Kingston (with Eaves) **House:** 17.62 sq **Land:** 611 m2

3 2 2 2

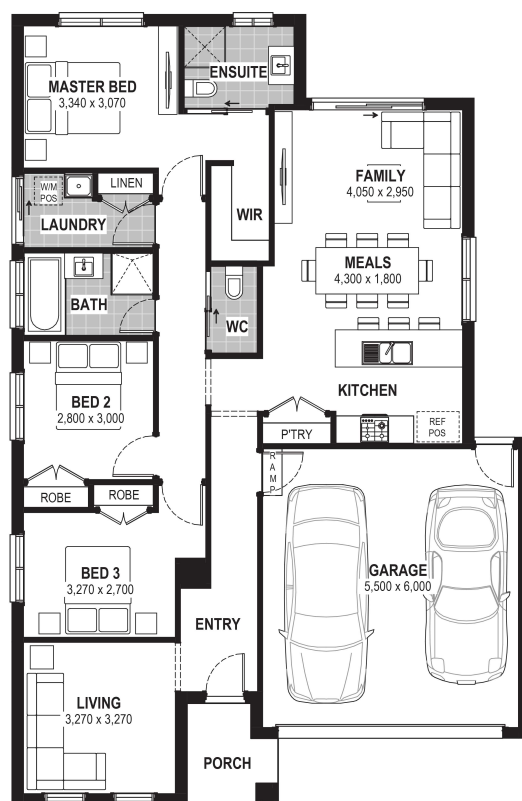
## Coral 18

### Inclusions

- Truecore Steel House Frame
- Colorbond Steel Roof (with Sarking)
- High Performance (uPVC) Double Glazed Safety Glass Windows & Doors
- 7 Star Energy Efficient to all orientations
- 7 x 440w Panels & 3KW Inverter (single phase)
- Bushfire Compliance to BAL 12.5
- 50 Year Structural Guarantee
- Range of stylish colour schemes
- Overhead Cabinetry to Kitchen
- Tiled Shower Bases
- Laundry Cabinetry
- Remote Garage Door with Openers
- Concrete Driveway up to 35qm
- Cooling
- Laminate Flooring & Carpet Throughout
- 450mm Eaves
- Big 40th Birthday Sale

### Contact:

Christina Nicholas  
0400803165  
houseandland@jgking.com.au



\*Conditions apply. Speak to your New Home Advisor for further details