






Chelsea 200

\$622,876

Lot 169 Stonecrop Drive Cobblebank 3338 VIC

4  **2**  **2** 

Exclusive House and Land Package - Huge rebates available! Call Today on 0421 880 868

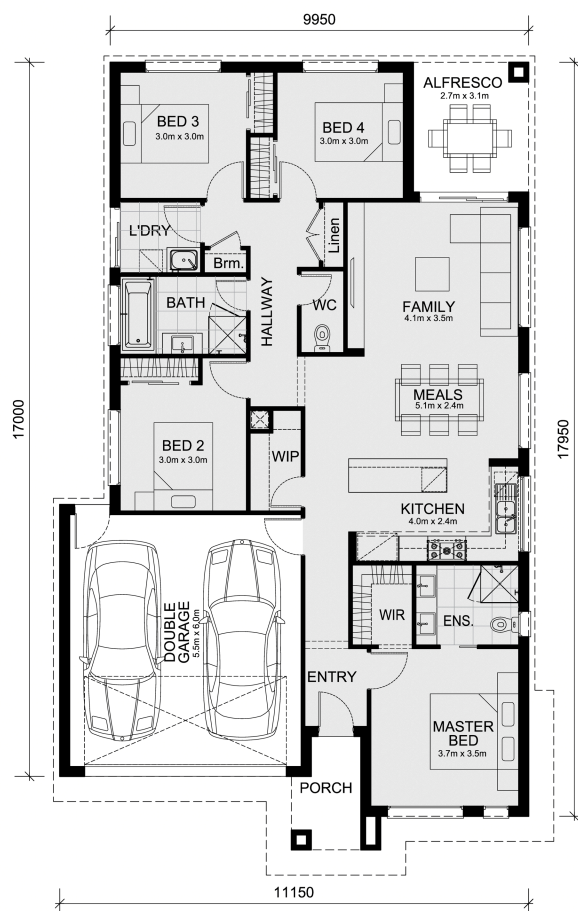
The Chelsea 200 House and Land Package!

* Mimosa Homes New Added Value Inclusions:

- 50 Year Structural Warranty!
- Inclusive of site costs & connections with H1 class slab as per standard inclusions!
- Quality floor coverings throughout entire home!
- Higher ceilings 2550mm to ground floor!
- Double Glazed Awning windows!
- LED Downlights to entire home!
- Fibre Optic Provision!
- Vitrified Compact Surface benchtop to kitchen, bathroom & ensuite!
- 900mm S/S upright oven and cook top with S/S canopy rangehood!
- Stainless steel Dishwasher and Microwave with trim kit!
- 7 star energy!
- Flexible floor plans & so much more!

CALL BUILDER DIRECT!

All plans and facades are indicative only and may change. Mimosa Homes may amend plans, specifications, and prices without notice. Package prices are based on a standard facade, standard inclusions, and suitable land availability, excluding developer/estate requirements. Facade and inclusion images may show non standard items not included in the price. Dimensions are approximate. Landscaping, fencing, decking, planter boxes, driveways, and paths are excluded unless specified.



Area Details

Land Size: 312sqm
Building Size: 184sqm

Contact: Mansi Patel
Phone: 0421 880 868
mansi@mimosahomes.com.au

www.mimosahomes.com.au

